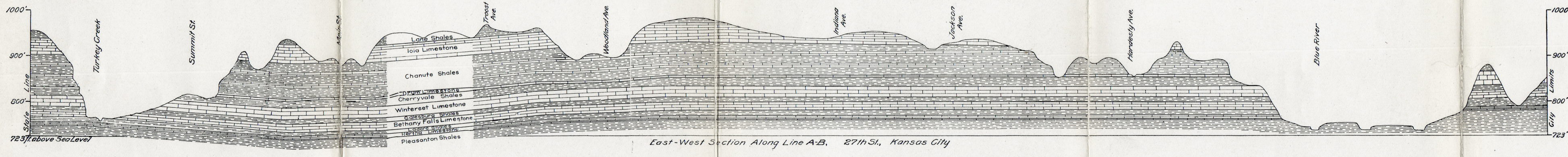
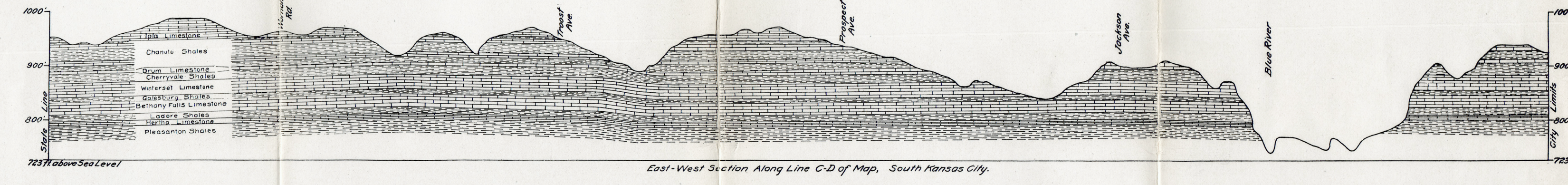


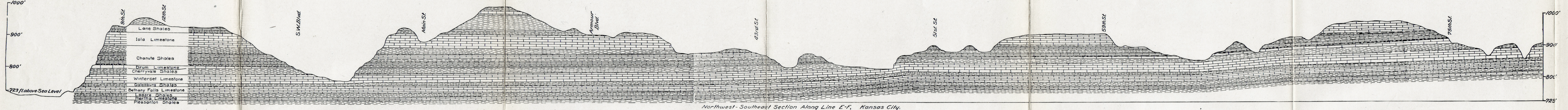
North-South Section Along Line G-H, Jackson Ave., Kansas City.



East-West Section Along Line A-B, 27th St., Kansas City.



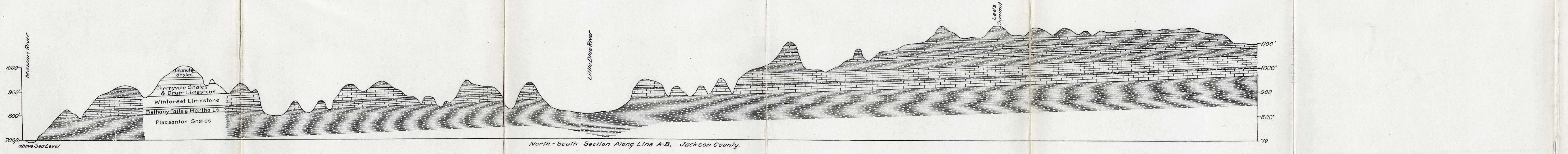
East-West Section Along Line C-D of Map, South Kansas City.



Northwest-Southeast Section Along Line E-F, Kansas City.



East-West Section Along Line C-D, Jackson County.



North-South Section Along Line A-B, Jackson County.

GEOLOGIC CROSS SECTIONS
 OF
KANSAS CITY AND JACKSON COUNTY.

Scale { Kansas City sections, 3 inches equal 1 mile.
 Jackson County sections, 1 inch equals 1 mile.